



RancheView



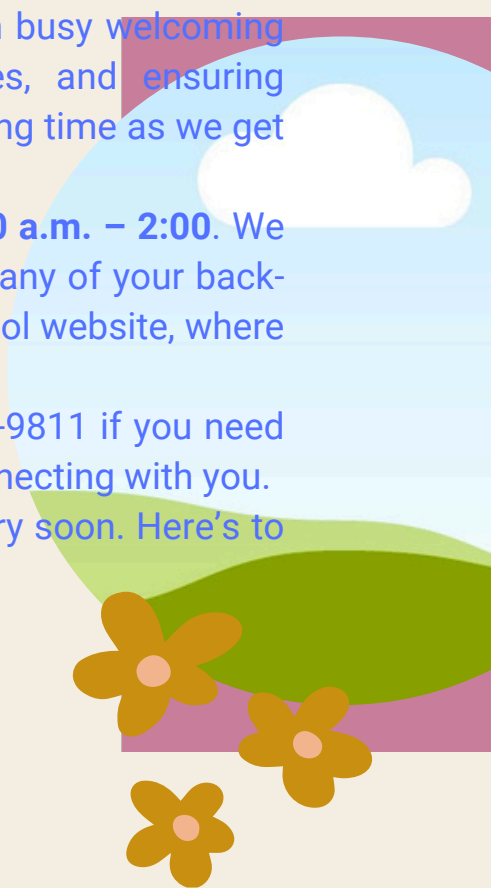
Back To School Info

Welcome Back

We are so excited to begin another wonderful year of learning and growth together at RancheView School. We hope that your summer was restful, joyful, and full of great memories! Over the past week, we have been busy welcoming new registrations, updating class lists, finalizing timetables, and ensuring classrooms are ready for students. It's always a busy but exciting time as we get everything in place to start the year off strong.

The school office will open on **Monday August 25th, from 8:00 a.m. – 2:00.** We hope the information included in this package helps answer many of your back-to-school questions, and we encourage you to explore our school website, where we will do our best to keep information current and helpful.

As always, please don't hesitate to reach out to us at 403-932-9811 if you need further assistance. We are here to help and look forward to connecting with you. We can't wait to welcome everyone back through our doors very soon. Here's to a fantastic 2025–26 school year! 🌸



Lynette LePan-Smith.
Principal

Hana Hooper
Asst. Principal

Welcome Back BBQ/ Open House

All current families are invited to the school on **Thursday, August 28 from 12:00 - 1:00** to meet their teacher, & visit classrooms. We will have a hotdog lunch outside on the back pad for Wranglers to connect and share summer stories!



www.rancheview.rockyview.ab.ca
follow us on our Facebook page -
Rancheview School Official



Upcoming Events

| | |
|------------------------|---|
| Thursday August 28 | Back to School BBQ/Open House |
| Monday September 1 | Labour Day (no school) |
| Tuesday September 2 | Staggered Entry Last names A - L |
| Wednesday September 3 | Staggered Entry Last names M-Z |
| Wednesday September 17 | Commun-I-Tea 2:30 pm |
| Thursday September 18 | RancheView Fundraising Society meeting 1:00 pm |
| Tuesday September 16 | School Council meeting 1:00 pm |
| Friday September 19 | Terry Fox Run |
| Monday September 29 | Professional Learning Day (no school) |
| Tuesday September 30 | National Day for Truth and Reconciliation (no school) |
| Friday October 3 | Photo Day |
| Monday October 13 | Thanksgiving Day (no school) |
| Monday October 20 | Professional Learning Day (no school) |

RancheView Bell Times (Monday - Friday)

| AM Kindergarten | | PM Kindergarten | |
|-----------------|--------------|-----------------|--------------|
| 8:00 - 8:05 | Drop Off | 11:30 - 11:35 | Drop Off |
| 8:05 | Class Begins | 11:35 | Class Begins |
| 10:42 | Soft end | 2:17 | Soft end |
| 10:45 | Dismissal | 2:20 | Dismissal |

| AM Pre-Kindergarten | |
|---------------------|--------------|
| 8:05 - 8:10 | Drop Off |
| 8:10 | Class Begins |
| 10:45 | Dismissal |

| Grades 1-8 | |
|--------------|---|
| 8:00 - 8:05 | Soft Entry |
| 8:05 | Class Begins |
| 9:55 - 10:05 | Recess Locker Break/DPA |
| 11:45 -12:05 | Lunch (grade 1-4) Recess (grade 5-8) |
| 12:05 -12:30 | Recess (grade 1-4) Lunch (grade 5-8) |
| 12:30 | Class Begins |
| 2:20 | Dismissal |

School Hours

7:30 am - main doors for staff only

7:50 am - Office Open

main door for Breakfast Club open

8:00 - all doors open & supervised

8:05 - all doors close - please enter through main doors if your child is late

2:20 - all doors open & supervised

2:25 - all doors close - please enter through main door if access to school is required

3:00 - Office Closed

- main door closed

Students who have not been picked up at the end of the day are brought to the office and staff will call emergency contacts.

Dogs

Dogs are NOT to be on school property. This includes sidewalks, parking lot, playground, picnic tables, and lower field. All dogs must be leashed. Please be considerate of those students who are extremely fearful of dogs on public sidewalks.

Drop off & Pick Up

We are fortunate to be a true community school where most students walk or bike to school. We have bike and scooter racks on the East and West end doors for students to park. We encourage parents to label their children's scooters and send a lock for both bikes and scooters. Please do not park, drop off, or pick up students in the RancheView parking lot. Parking may be found along Sundown Road. There is 'Kiss and Go' drop off on Sunvalley Road. Those parking in the Sunvalley Road cul de sac do so at their own risk. We will again have one 'manned' pedestrian crossing on Sunvalley Road and one on Sundown Road. Please follow all traffic signs and laws. The speed limit through and around the school is 30km/h. We have one RockyView bus for morning and afternoon transportation. Thank you for keeping our students safe♥♥

Absences / Pick Ups/off Campus

Student Absences should be reported through the SafeArrivalapp. Information may be found on the RockyView Schools website:

https://www.rockyview.ab.ca/schools/learning/absence_reporting

We request that families provide a note or email to homeroom teachers if they are picking up their child during the day for an appointment. This will help have your child at the office at the correct time. All guardians must check out their child through the school Envoy app located on the 2 iPads in the office. Students must check in through Envoy when they return. Only adults that have been approved in PowerSchool will be able to check out a student. Please inform the office if there is an alternate arrangement. Please inform the school of those who are not permitted to pick up a child.

Students are not allowed to leave the school premises unless they are picked up by a guardian or have a signed permission form (grade 7 & 8 only) at the office. Permission forms are found in School Engage or at the office. All students MUST check in and out of Envoy.



Doors

Students will enter during the year through the following:

West - Grade 1 & 2

East - Pre-Kindergarten & Grade 3

South - Kindergarten & grade 5

North - Grade 4 & 6

Main - Grade 7 & 8

Two Shoe Policy

We ask that students have a set of indoor shoes they will keep at school for the year. It is essential that students have proper weather outdoor footwear. These will be stored on designated boot racks.

We also ask that those Visitors to the school also follow a two shoe policy (particularly during wet, snowy or muddy weather).

Thank you for keeping our school beautiful 🌸

Allergy Aware

Please be aware that some of our school community members have identified severe allergic reactions. Please be respectful of these health concerns. Individual homeroom teachers will let families know what allergens they should be aware of. Thank you for your understanding.

Extra Clothes

Students in Pre-Kindergarten, Kindergarten and Grades 1-4 should have a set of extra clothes in a plastic bag in their backpacks in case of spills or accidents. Thank you.

SchoolCash Online

Each student has a SchoolCash Online account and parents have access to this account to pay for school fees and field trips. No cash will be accepted at the office. [SchoolCash Online](#)

PowerSchool

All parents have access to RVS' PowerSchool Parent Portal, which is designed to provide real-time information.

School Code: 1998 & District Code QMCD
[PowerSchool Information](#)

School Supplies

Students in Pre-Kindergarten, Kindergarten and grades 1-4 will have all school supplies provided. Families will need to provide a lunch kit, water bottle, backpack, indoor shoes, and other personal items. Individual classroom teachers may ask for help with supplies for their classroom such as tissue. Students in Grades 5-8 will need to provide their own supplies. Lists may be found on the RancheView website. Please label all items, including clothing!!

Student Health

Please let classroom teachers and the office know if your child has an allergy or medical condition that requires monitoring. Medical protocols and procedures will be established. All student medication must have a signed form (pick up at office) to be administered by adults in the building.

www.rancheview.rockyview.ab.ca

follow us on our Facebook page -

Rancheview School Official



Volunteers

We are so thankful for the many volunteers we have in our building! We encourage families to come to the school and participate in our many opportunities! Volunteers working directly in the school require a Vulnerable Sector check. Information regarding these requirements may be obtained at the office. We require all volunteers to check in and out of the office during the school day. Volunteers participating in School Council or Fundraising Society meetings are not required to have a check done.

School Council

School council members work together to support and enhance student learning. They provide a way for members of the community to consult with and offer advice to principals and school boards. School councils: are a bridge between the school and community (alberta.ca). We currently do not have a School Council Executive. Until we fill these positions we will have an Advisory parent group. The first meeting will be Tuesday September 23rd at 1:00. Please see our website for more information.

Cell Phones & Smartwatches

Devices are to stay in a student's backpack or locker during instructional time. Students will have an opportunity to check their phones during lunch break.

RancheView Fundraising Society

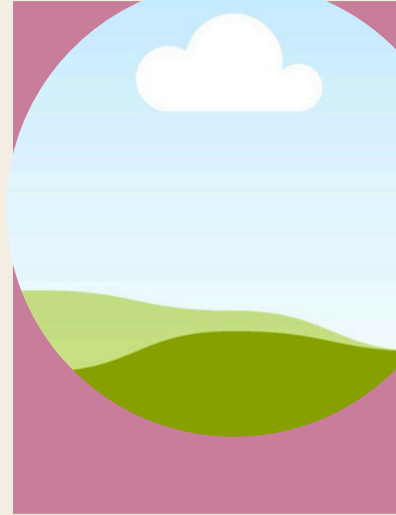
The Fundraising Society is a distinct group that solely runs fundraising opportunities.

There are 4 meetings a year held on a Thursday at 7:00 pm in the school Learning Commons.

More information on our website.

Breakfast Club

A light continental breakfast for all students is offered each morning. The Club starts at 7:50 and ends at 8:05. It is manned solely by adult and student volunteers. One day a week volunteers bake homemade goods for the breakfasts. The Breakfast club provides to upwards of 400 students a day. Please contact the office for more information.



RanchView Staff

Office

| | |
|---------------------|------------------------------|
| Lynette LePan-Smith | Principal |
| Hana Hooper | Assistant Principal |
| Jennifer Preece | Administrative Assistant II |
| Joelle Kile | Administrative Assistant III |

Learning Support

| | |
|-------------------------|---------------------------|
| Dustin Ehalt | Child Development Advisor |
| Alexis Rupchan | Child Development Advisor |
| Melissa Elves-Kerkhoven | Literacy/Numeracy Coach |
| Whitney Edworthy | Learning Support Teacher |
| Sarah Oxford | Learning Support Teacher |

| | |
|-------------------|--------------------------|
| Wendy Wylie | Pre-Kindergarten Teacher |
| Caitlyn Robertson | Kindergarten Teacher |

| | |
|-------------------|-------------------|
| Nadine Gudmundson | Grade 1 Teacher |
| Dayna Freitag | Grade 1 Teacher |
| Jennifer Krawetz | Grade 1 Teacher |
| Jillian Cyr | Grade 1/2 Teacher |

| | |
|------------------|-----------------|
| Brodie MacDonald | Grade 2 Teacher |
| Amy Sadorsky | Grade 2 Teacher |
| Jackie Verbeek | Grade 2 Teacher |

| | |
|--------------------|-----------------|
| Marlene Copithorne | Grade 3 Teacher |
| Chelsey Stuart | Grade 3 Teacher |
| Dusty Estrada | Grade 3 Teacher |

| | |
|-----------------|-----------------|
| Tamara Schmidt | Grade 4 Teacher |
| Isaac Halstrom | Grade 4 Teacher |
| Daphne Styranka | Grade 4 Teacher |

| | |
|------------------|-----------------|
| Ashlyn Campbell | Grade 5 Teacher |
| Tannon Schmaltz | Grade 5 Teacher |
| Wendy Sunderland | Grade 5 Teacher |

| | |
|-------------------|-----------------|
| Hilary Rankin | Grade 6 Teacher |
| Suzanne Vitoratos | Grade 6 Teacher |
| Sima Gersh | Grade 6 Teacher |

| | |
|-------------------|-------------------|
| Kade Clark | Grade 7/8 Teacher |
| Lanny Lam | Grade 7/8 Teacher |
| Ashley Luthin | Grade 7/8 Teacher |
| Diana Taylor | Grade 7/8 Teacher |
| Tamika Villeneuve | Grade 7/8 Teacher |

| | |
|----------------|--------------------------------|
| Greg Kapiniak | Band / Elementary Music |
| Graham Selwood | Physical Education / Athletics |

Support Staff

| | |
|-----------------|------------------------------|
| Melinda Friesen | Learning Assistant |
| Tricia Koomans | Learning Assistant |
| Julie McCormick | Learning Assistant |
| Diana Paschke | Learning Assistant |
| Carol Randall | Learning Assistant |
| Allie Barsby | Learning Assistant |
| Kiran Moen | Learning Commons Facilitator |

Caretaking

| | |
|---------------|------------------------|
| Ken Williams | Head Building Operator |
| Peter Michaud | Building Operator |

Teachers will send a welcome letter prior to staggered entry. Families may also check PowerSchool to see what homeroom class their child has been assigned to.

Staggered Entry

We will have a staggered entry to start the school year off.

Tuesday September 2 - Only those students with a surname beginning with **A-L** in gr. 1-8 will attend all day.

Wednesday September 3 - Only students with a surname beginning with **M-Z** in gr. 1-8 will attend all day.

Thursday September 5 - All students in grades K-8 attend school

Please note that Pre-Kindergarten and Kindergarten students will follow the same staggered entry schedule as the rest of the school.

Families will receive a Welcome to my Class letter from teachers by Wednesday August 27th. Please contact the office you have not received a letter by then.

For the first week, families of grade K-4 students will meet their teacher in morning on the back field. Middle school students (grade 5-8) will enter through their doors and head upstairs where staff will be there to help them find their classroom! At the end of the day, families will meet their children as they dropped them off (field or doors).

